

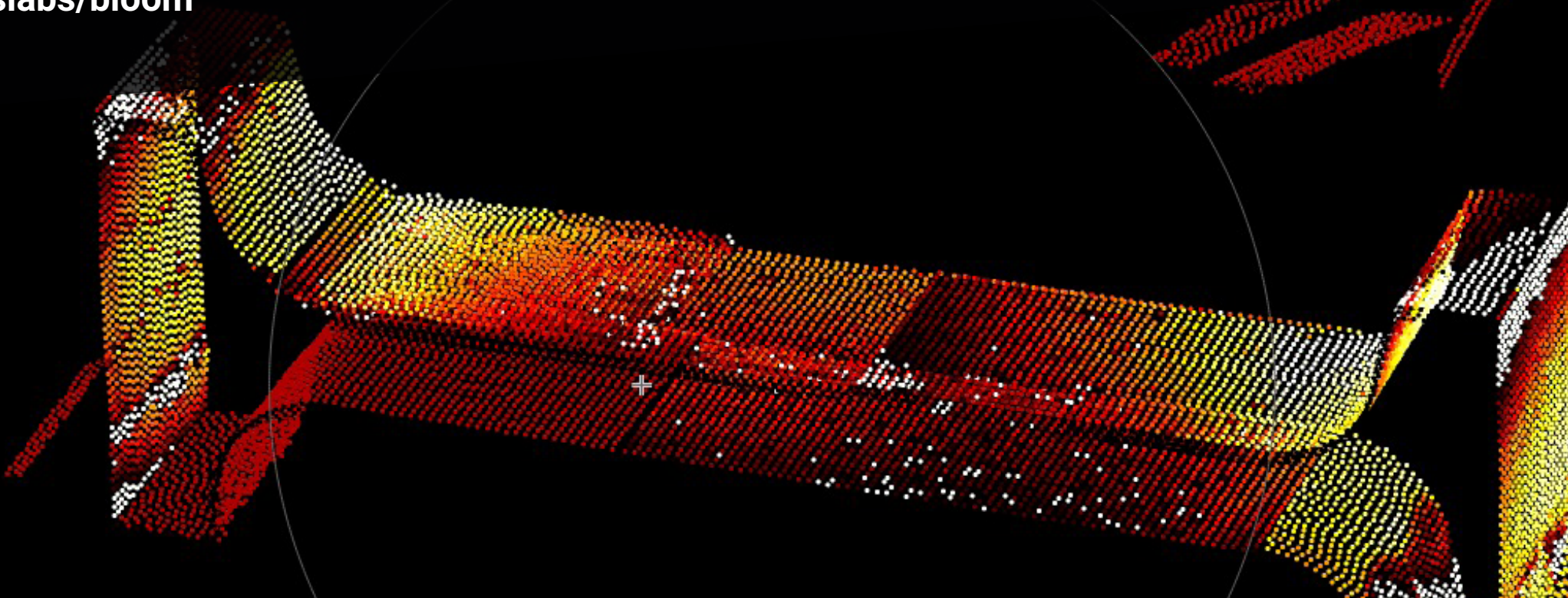
4M

ERMAL 3D VIEW

# PolySHAPE



Smart robot for dimensional control of billets/  
slabs/bloom



**ABOUT THE SYSTEM:**

MEASUREMENT ACCURACY:  
H BEAM UP TO +/- 2 MM (+/- 0,07 INCH)  
BILLETS UP TO +/-1MM (+/- 0,03 INCH)

3D VISION LASER SCANNER AND SPECIFIC  
POLYTEC SOFTWARE

ADVANCED ALGORITHM FOR COLLISION  
DETECTION TO GUARANTEE SAFETY

**USEFUL TO KNOW:**

SAFETY | EFFICIENCY | TRACEABILITY

RELIABLE FEEDBACK ON YOUR PRODUCTION

EFFICIENCY REPORT BY SHIFT, WITH MONTHLY  
& DAILY STATISTICS ON REQUEST

4.0 FACILITATION CERTIFIABLE

**AVAILABLE:**

PolyTAG BLE: Full automatic hot billet tagging  
robotic cell

### TECHNICAL INFORMATION:

Optical resolution: 0.2 mm / 0.008 in  
Repeatability: 0.1mm / 0.0039 inch  
Billet size: from 80 to 260 mm (3 to 10 inch)  
(billet square and round, H beam)  
Billet temperature: from 0 to 1000 ° C  
(32 to 1800 ° F)

Technical support is always available but...  
**TAKE CARE OF YOUR ROBOT!**

Polytec suggests you to take care of robotic cells dedicating a couple of hours, once a week, to clean and to check most relevant components/ tools. Once a year, a one-day BM Service is worth.

Writing to [service@bmgroup.com](mailto:service@bmgroup.com) you can reserve the best time, according to production plans.

### USER FRIENDLY HMI:

- Dimensional data of section face visualization
- Customized setting of alarms parameters
- Analysis and report acquisition

### VPN REMOTE ACCESS & ASSISTANCE

### SPECIAL SOFTWARE FUNCTIONALTIES FOR HOMING RECOVERY

